

These drawings are published as informational guides only. Full details are to be coordinated with project installation drawings. Branch Technology accepts no liability with respect to these drawings. Architectural, engineering and other technical advice must be obtained to assess product suitability for any particular project.

1 SECTION DETAIL - HORIZONTAL JOINT



Branch

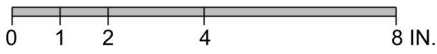
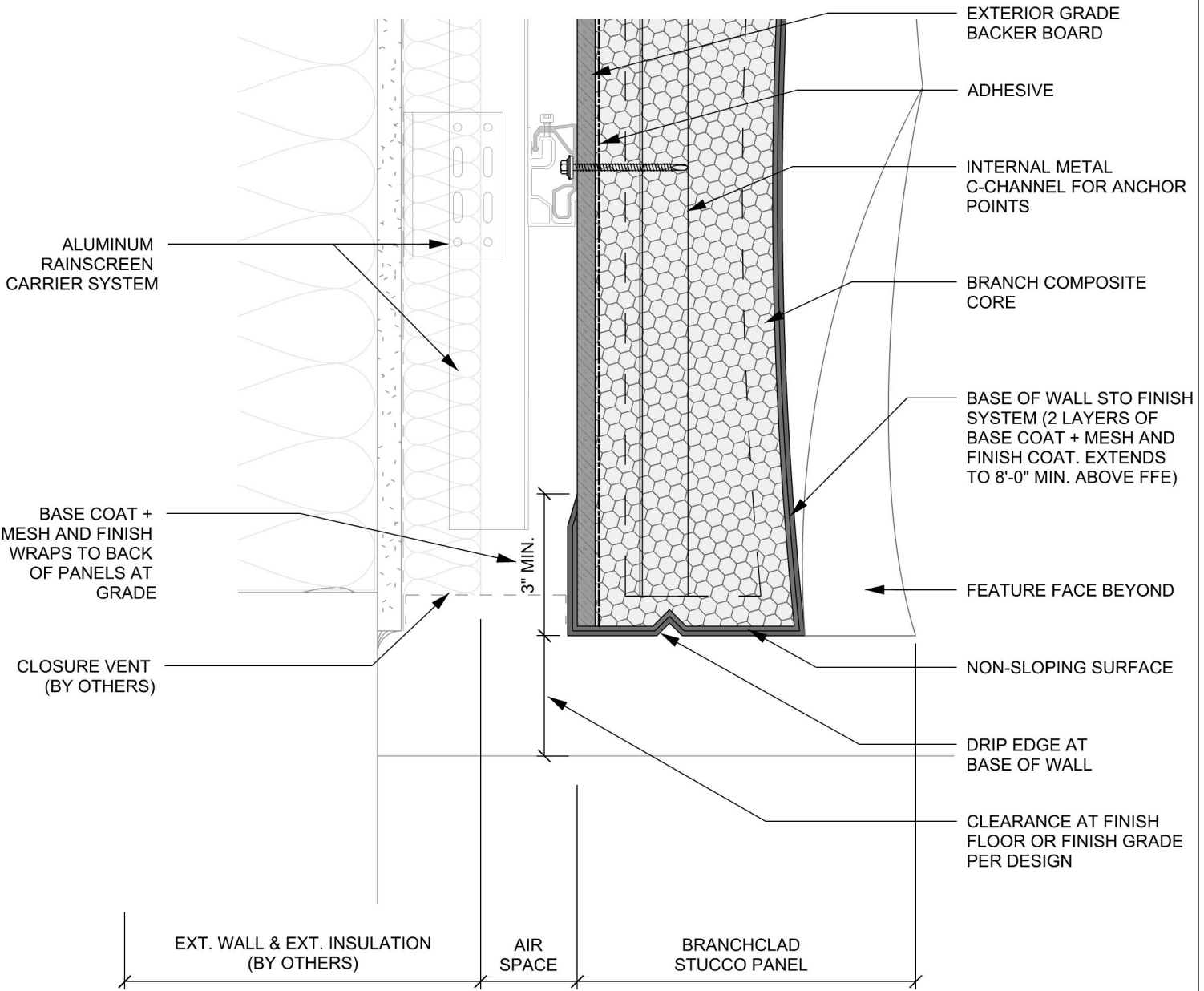
Contact:
 branchtechnology.com
 423.682.8800

Product Type:
 BranchClad Stucco

Drawing Type:
 Standard Details

Date: 06.15.2022

Revision Number: 001



These drawings are published as informational guides only. Full details are to be coordinated with project installation drawings. Branch Technology accepts no liability with respect to these drawings. Architectural, engineering and other technical advice must be obtained to assess product suitability for any particular project.

1 SECTION DETAIL - BOTTOM OF PANEL SECTION



Branch

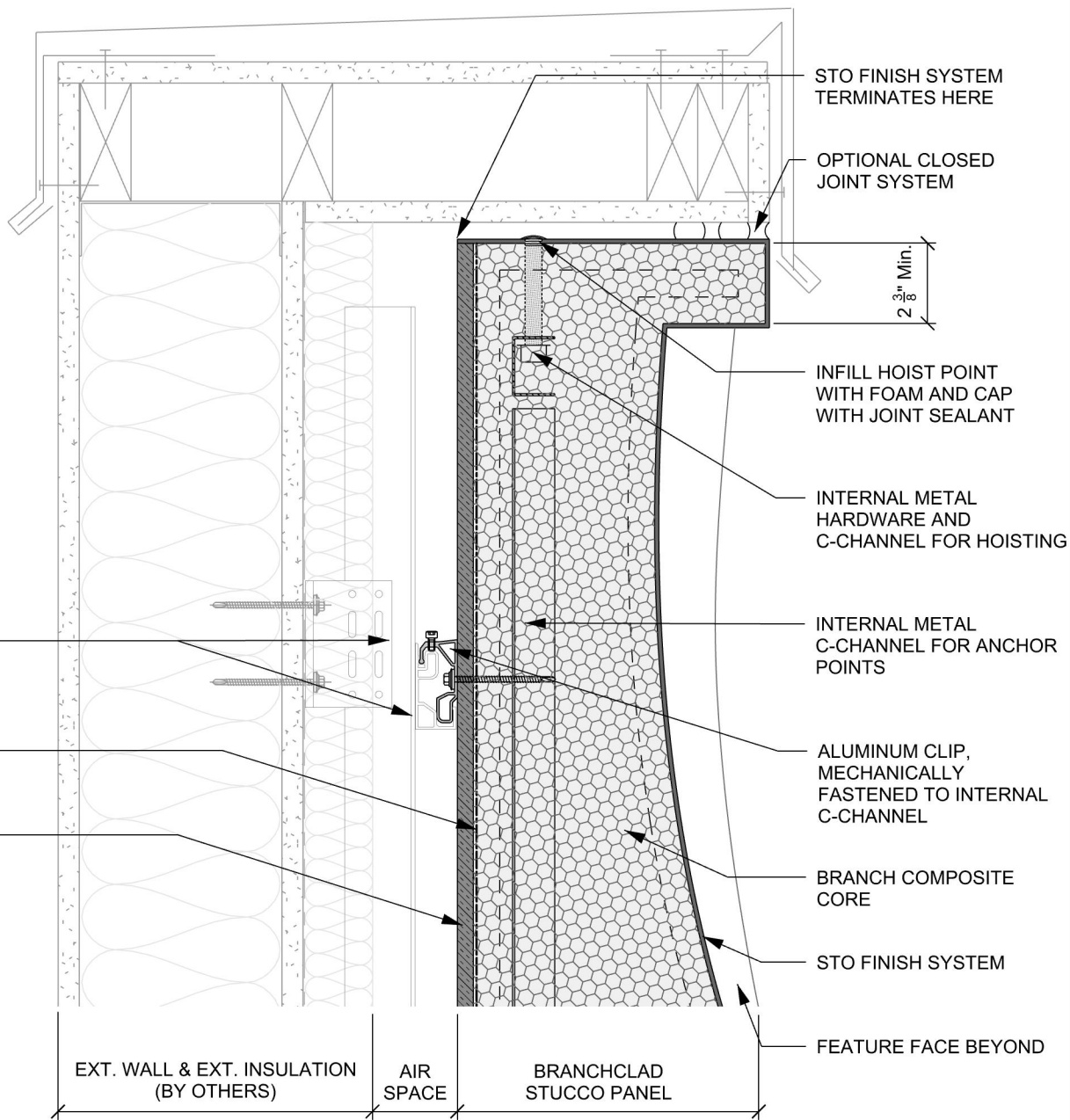
Contact:
 branchtechnology.com
 423.682.8800

Product Type:
 BranchClad Stucco

Drawing Type:
 Standard Details

Date: 06.15.2022

Revision Number: 001



ALUMINUM
RAINSCREEN
CARRIER SYSTEM

ADHESIVE

EXTERIOR GRADE
BACKER PANEL

STU FINISH SYSTEM
TERMINATES HERE

OPTIONAL CLOSED
JOINT SYSTEM

2 3/8" Min.

INFILL HOIST POINT
WITH FOAM AND CAP
WITH JOINT SEALANT

INTERNAL METAL
HARDWARE AND
C-CHANNEL FOR HOISTING

INTERNAL METAL
C-CHANNEL FOR ANCHOR
POINTS

ALUMINUM CLIP,
MECHANICALLY
FASTENED TO INTERNAL
C-CHANNEL

BRANCH COMPOSITE
CORE

STU FINISH SYSTEM

FEATURE FACE BEYOND

EXT. WALL & EXT. INSULATION
(BY OTHERS)

AIR
SPACE

BRANCHCLAD
STUCCO PANEL

These drawings are published as informational guides only. Full details are to be coordinated with project installation drawings. Branch Technology accepts no liability with respect to these drawings. Architectural, engineering and other technical advice must be obtained to assess product suitability for any particular project.



1 SECTION DETAIL - PARAPET SECTION DETAIL A WITH METAL COPING



Branch

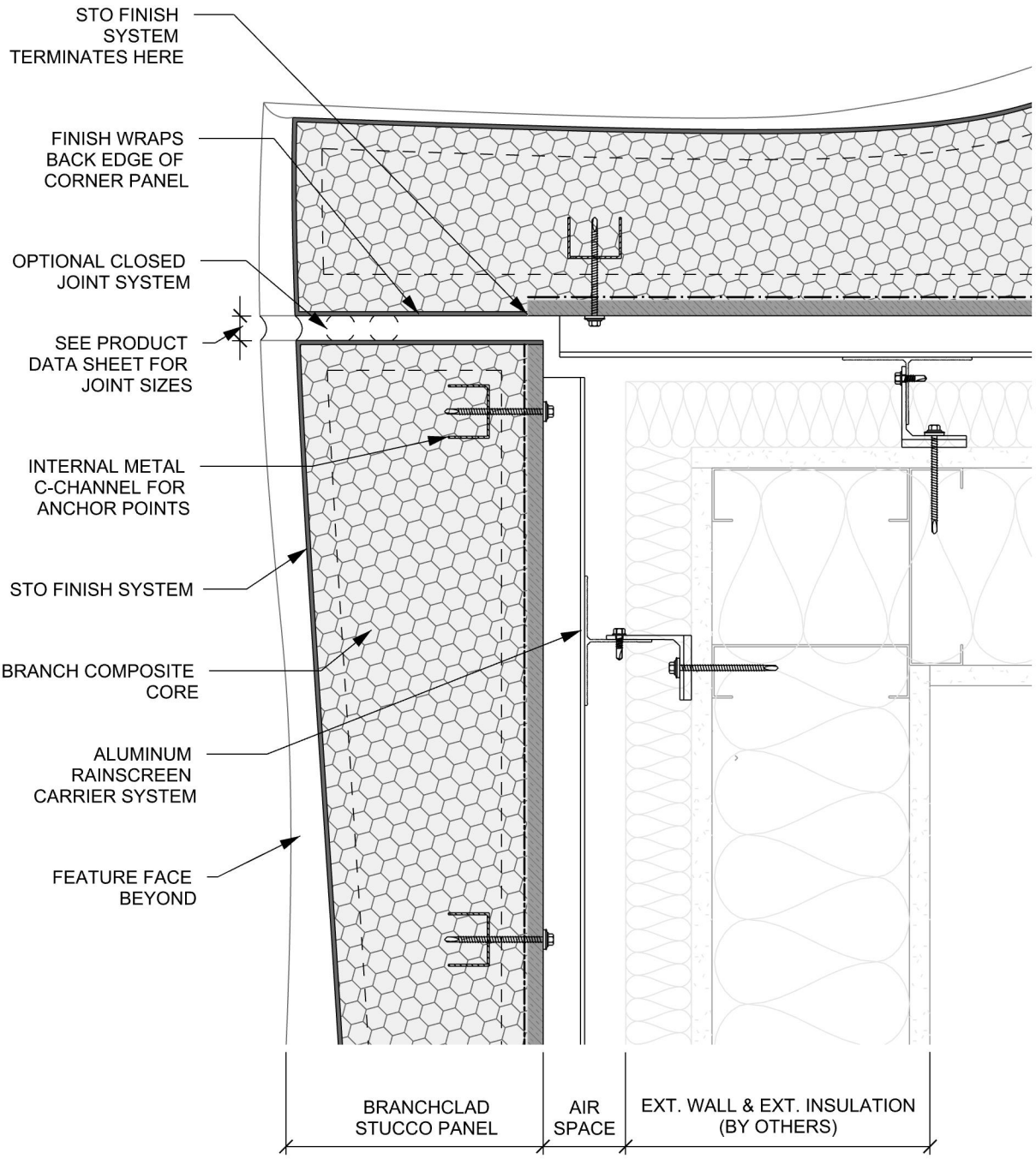
Contact:
branchtechnology.com
423.682.8800

Product Type:
BranchClad Stucco

Drawing Type:
Standard Details

Date: 06.15.2022

Revision Number: 001



These drawings are published as informational guides only. Full details are to be coordinated with project installation drawings. Branch Technology accepts no liability with respect to these drawings. Architectural, engineering and other technical advice must be obtained to assess product suitability for any particular project.

1 PLAN DETAIL - OUTSIDE CORNER



Branch

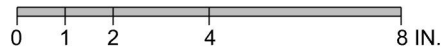
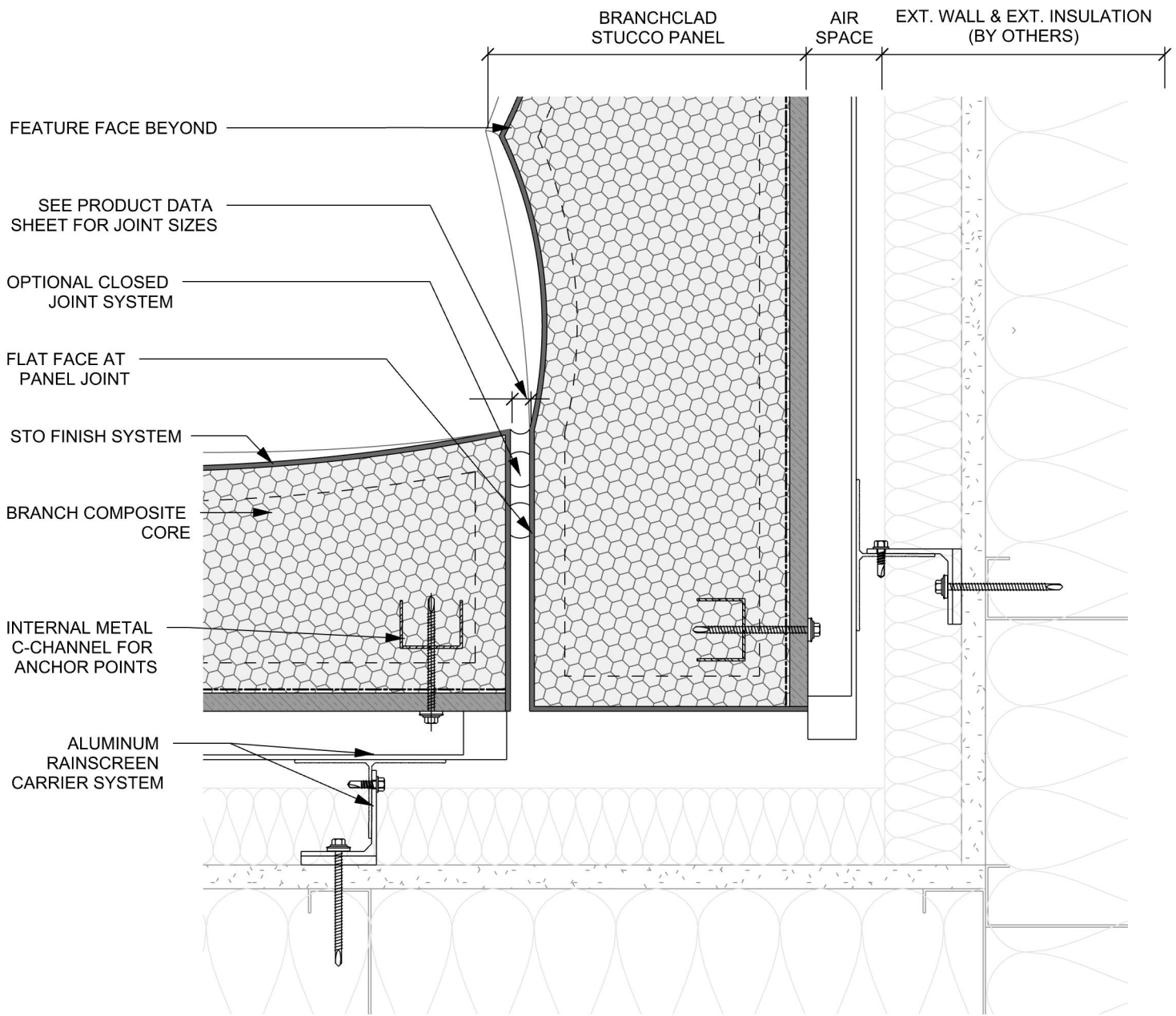
Contact:
branchtechnology.com
423.682.8800

Product Type:
BranchClad Stucco

Drawing Type:
Standard Details

Date: 06.15.2022

Revision Number: 001



These drawings are published as informational guides only. Full details are to be coordinated with project installation drawings. Branch Technology accepts no liability with respect to these drawings. Architectural, engineering and other technical advice must be obtained to assess product suitability for any particular project.

1 PLAN DETAIL - INSIDE CORNER



Branch

Contact:
 branchtechnology.com
 423.682.8800

Product Type:
 BranchClad Stucco

Drawing Type:
 Standard Details

Date: 06.15.2022

Revision Number: 001

SEE PRODUCT DATA SHEET FOR JOINT SIZES

OPTIONAL CLOSED JOINT SYSTEM

FEATURE FACE BEYOND

STO FINISH SYSTEM

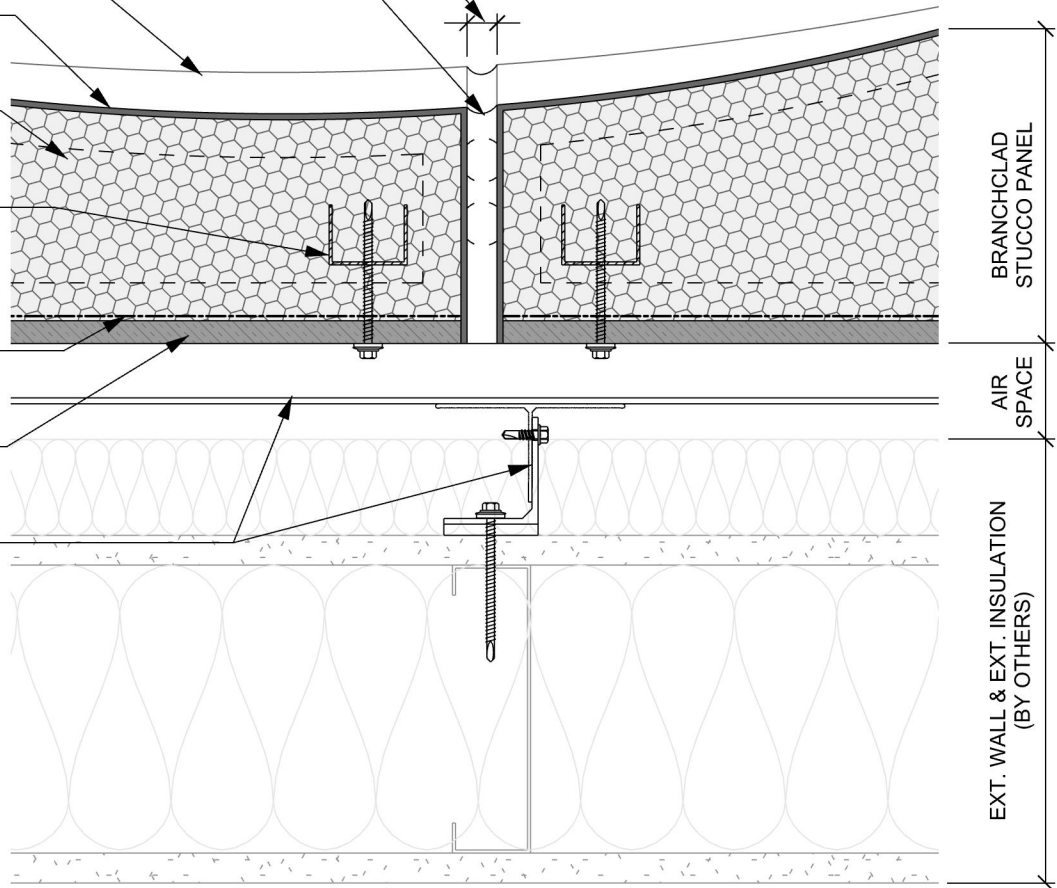
BRANCH COMPOSITE CORE

INTERNAL METAL C-CHANNEL FOR ANCHOR POINTS

ADHESIVE

EXTERIOR GRADE BACKER PANEL

ALUMINUM RAINSCREEN CARRIER SYSTEM



These drawings are published as informational guides only. Full details are to be coordinated with project installation drawings. Branch Technology accepts no liability with respect to these drawings. Architectural, engineering and other technical advice must be obtained to assess product suitability for any particular project.

0 1 2 4 8 IN.

1 PLAN DETAIL - VERTICAL JOINT



Branch

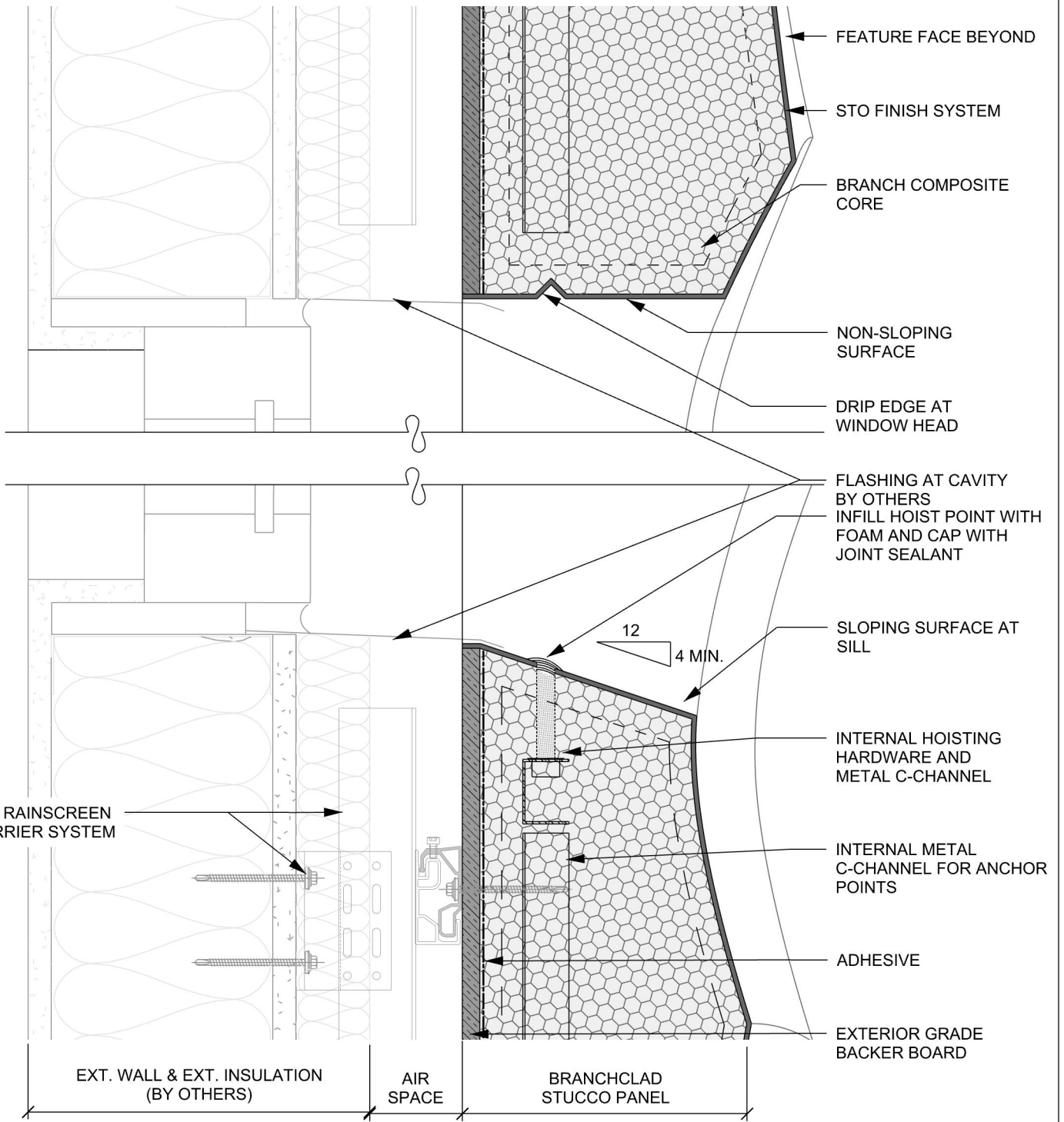
Contact:
branchtechnology.com
423.682.8800

Product Type:
BranchClad Stucco

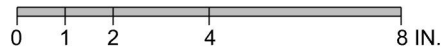
Drawing Type:
Standard Details

Date: 06.15.2022

Revision Number: 001



These drawings are published as informational guides only. Full details are to be coordinated with project installation drawings. Branch Technology accepts no liability with respect to these drawings. Architectural, engineering and other technical advice must be obtained to assess product suitability for any particular project.



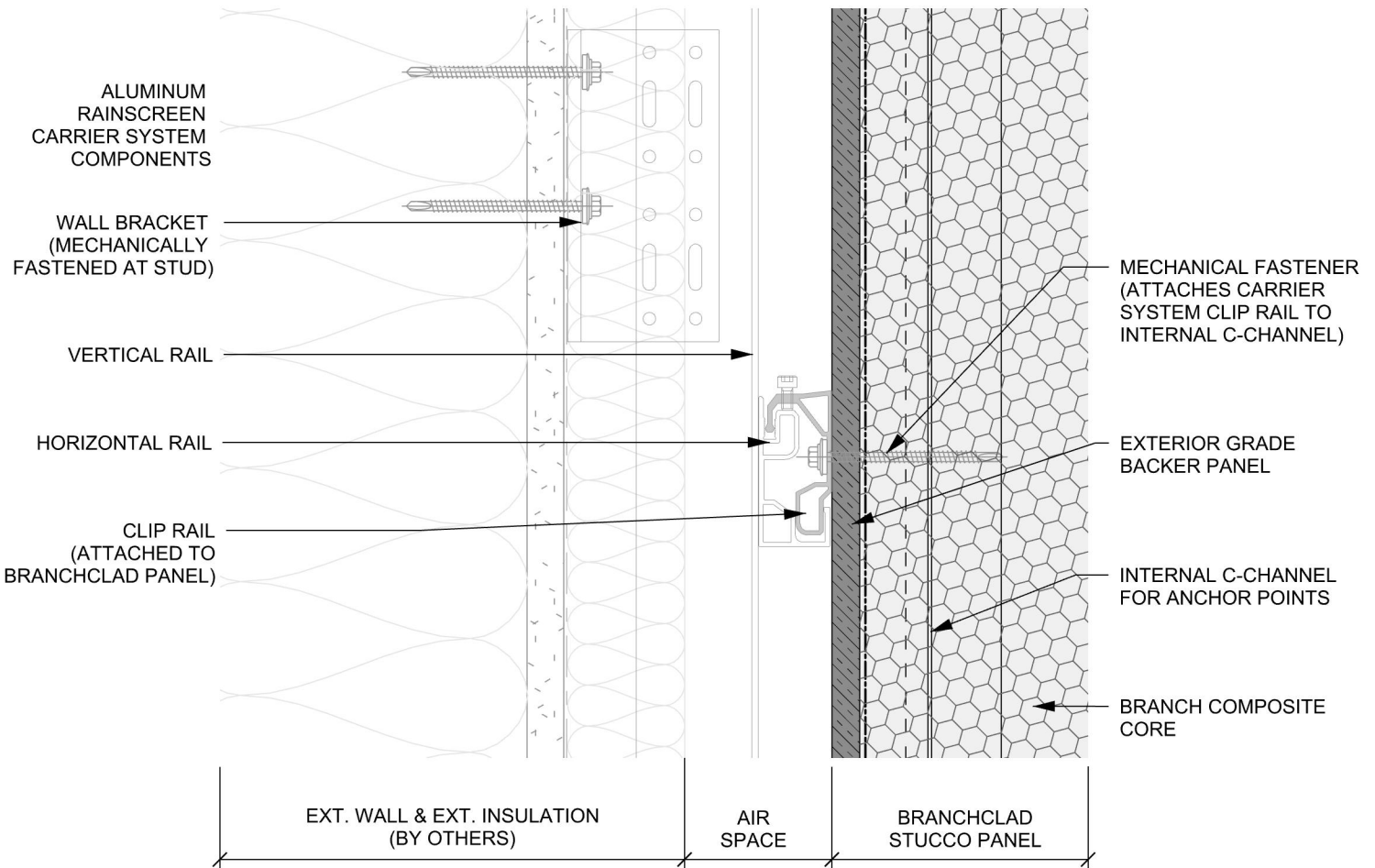
1 SECTION DETAIL - WINDOW HEAD/SILL



Branch

Contact:
 branchtechnology.com
 423.682.8800
 Product Type:
 BranchClad Stucco

Drawing Type:
 Standard Details
 Date: 06.15.2022
 Revision Number: 001



These drawings are published as informational guides only. Full details are to be coordinated with project installation drawings. Branch Technology accepts no liability with respect to these drawings. Architectural, engineering and other technical advice must be obtained to assess product suitability for any particular project.

1 SECTION DETAIL - ANCHOR POINT



Branch

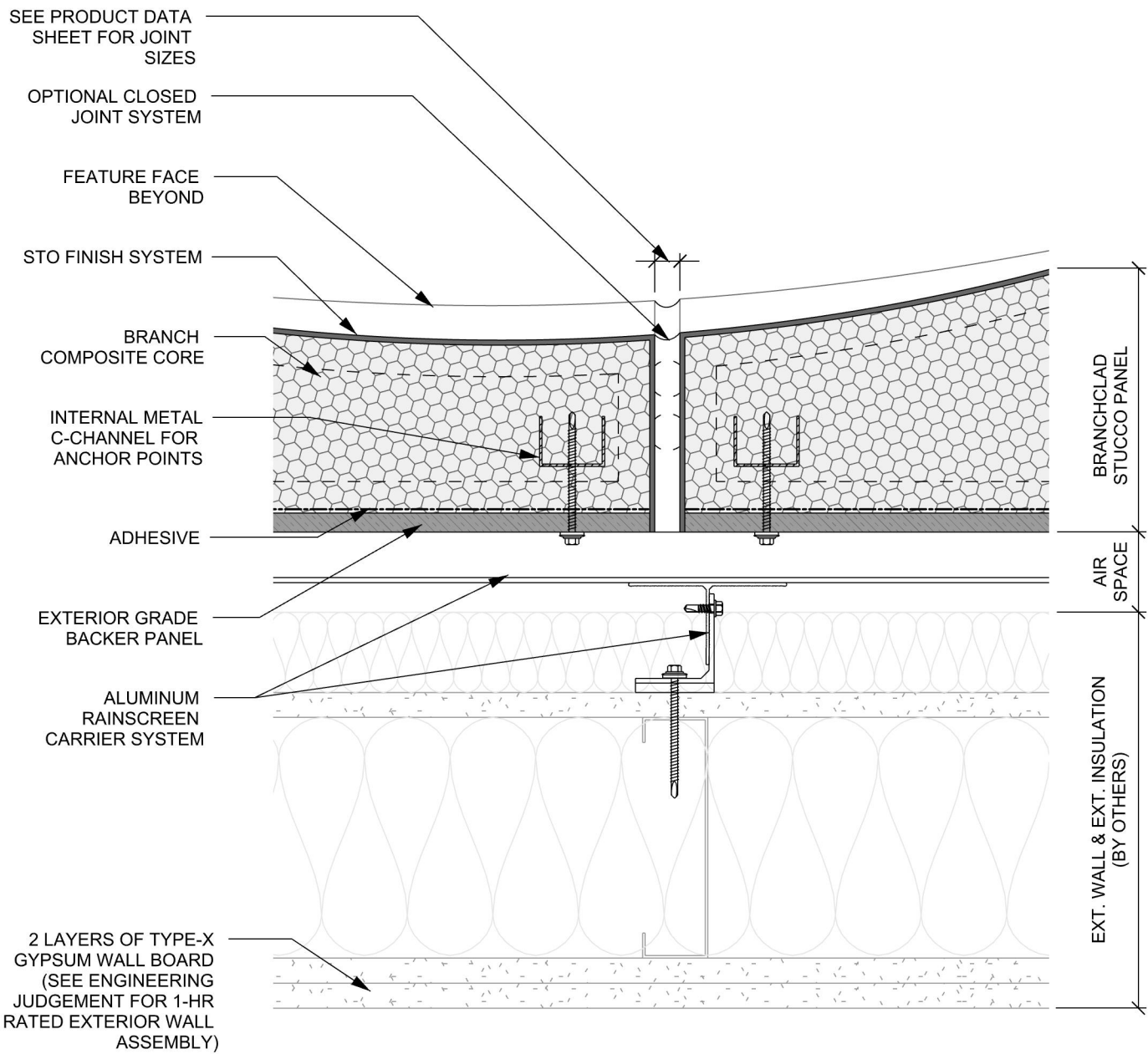
Contact:
branchtechnology.com
423.682.8800

Product Type:
BranchClad Stucco

Drawing Type:
Standard Details

Date: 06.15.2022

Revision Number: 001



These drawings are published as informational guides only. Full details are to be coordinated with project installation drawings. Branch Technology accepts no liability with respect to these drawings. Architectural, engineering and other technical advice must be obtained to assess product suitability for any particular project.



1 PLAN DETAIL - 1 HR RATED EXTERIOR WALL



Branch

Contact:
branchtechnology.com
423.682.8800

Product Type:
BranchClad Stucco

Drawing Type:
Standard Details

Date: 06.15.2022

Revision Number: 001