



StoPanel® 3DP

POWERED BY BRANCH TECHNOLOGY

Prefabricated megapanel facades with
unprecedented design freedom

Our unique Cellular Fabrication (C-Fab(r)) process enables Composite Core shapes to be produced in our direct digital fabrication facility, then shipped to one of the many StoPanel Affiliates who then apply the selected finish to the surface of the panel, readying the panel for installation.



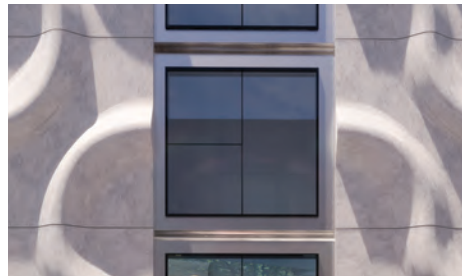
Branch
TECHNOLOGY



COMPLETE CONTROL. UNPRECEDENTED CREATIVITY.

To manufacture the StoPanel® 3DP panels, a lightweight polymer matrix is robotically 3D printed, filled with a 2-lb density insulating foam, and robotically milled to exact dimensions.

The process allows for unprecedented creativity as virtually any shape or form can be created at a large scale for use with any of Sto's high-performing finish and color options. Using Design Assist Services, you can fully explore the aesthetic possibilities. Because shapes are produced directly from digital files rather than being interpreted from shop drawings, the result is extreme accuracy that is true to the original design. The fully tested system with all control layers – AMB, continuous insulation and watershedding, UV resistant finish – performs to the highest standards and meets International Building Code standards. Further, the process is faster to complete and is inherently less wasteful than traditional construction methods, which means more rapid ROI for the owner.



Format

Size: Maximum: 10'x45' panel size
Thickness: 2" - 14"

Articulation: 12" maximum out of plane articulation
8" minimum feature size
6" minimum radius of defined edge



Lightweight

Dramatically reduced structural and shipping requirements compared to GFRC, concrete claddings



Performance

Fully tested system with all control layers – AMB, continuous insulation and watershedding, UV resistant finish